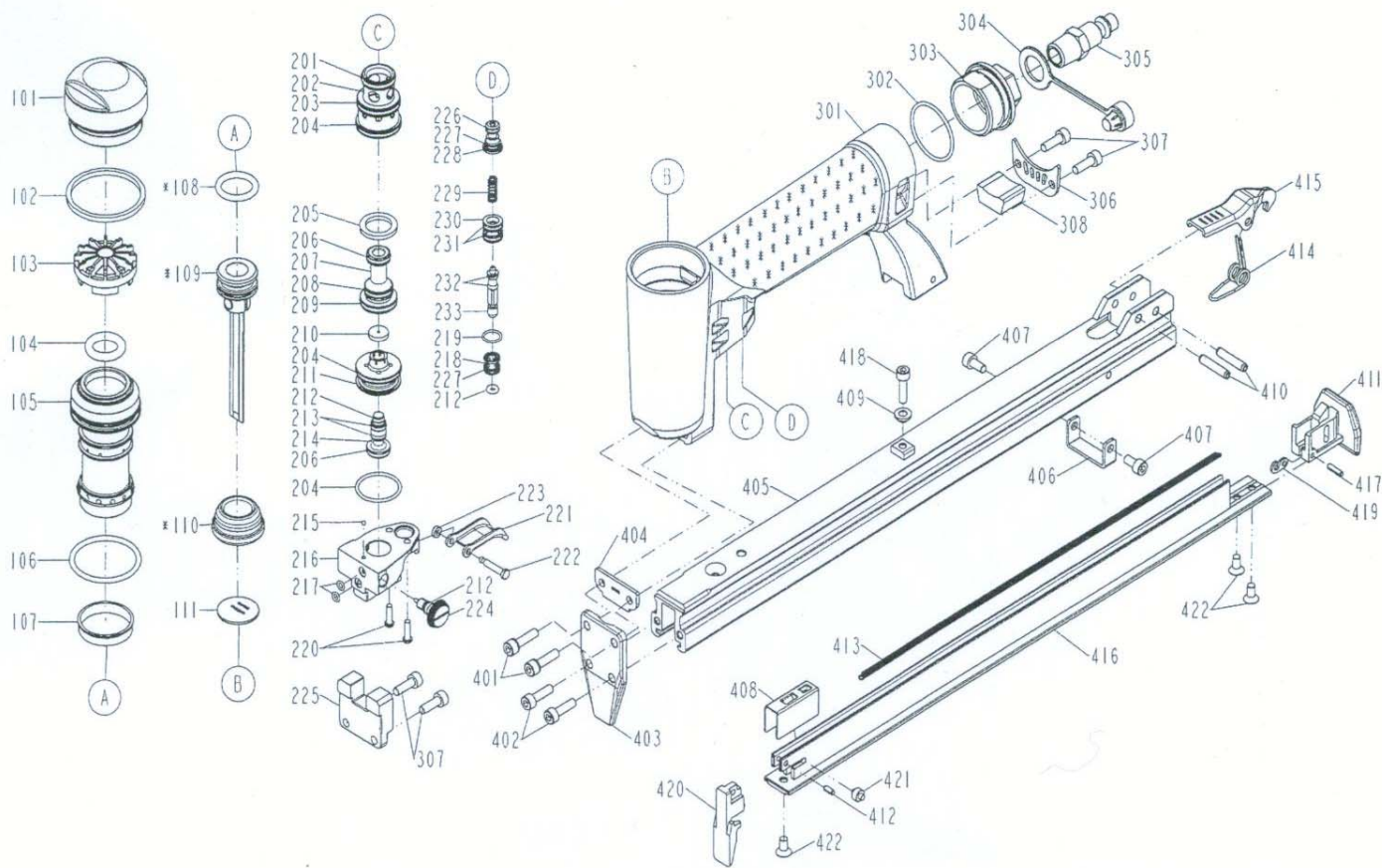


DIAGRAM OF US7116LMAUTO



ITEM NO.	PART NO.	DESCRIPTION	ITEM NO.	PART NO.	DESCRIPTION	ITEM NO.	PART NO.	DESCRIPTION
101	830874	DEFLECTOR	224	830893	ADJUST AXIE	417	920371	SPRING PIN
102	920601	PACKING	225	830894	ANCHOR BLOCK	418	920640	HEX.SOC.HD.BOLT
103	830870	SEAL	226	830895	O - RING	419	830864	POSITIONING SHEET
104	830336	O-RING	227	920828	O - RING	420	841255	DRIVER GUIDE
105	830841	CYLINDER	228	830896	TRIGGER VALVE HEAD C	421	841256	ROLLER
106	830616	O - RING	229	830621	SPRING	422	920900	COUNTER SUNK SCREW
107	830617	CYLINDER RING	230	830898	TRIGGER VALVE HEAD			
108	830612	O - RING	231	940643	O - RING			
109	830842	DRIVER UNIT	232	830899	O - RING			
110	920686	BUMPER	233	830900	TRIGGER VALVE STEM A			
111	841251	DRIVER GUIDE	301	841150	GUN BODY UNIT			
201	830373	O - RING	302	830375	O - RING			
202	830877	TRIGGER VALVE HEAD B	303	810921	END CAP			
203	830300	O - RING	304	940620	AIR PLUG CAP			
204	830374	O - RING	305	920320	AIR PLUG			
205	830878	COLLAR	306	820538	GUIDE PLATE			
206	830879	O - RING	307	920199	HEX.SOC.HD.BOLT			
207	830880	VALVE PLUNGER A	308	810641	MUFFLER			
208	841149	O - RING	401	830848	BOLT ASSY			
209	830881	O - RING	402	920360	HEX.SOC.HD.BOLT			
210	830882	CUSHION	403	830849	DRIVER GUIDE COVER			
211	830883	PLUNGER CAP	404	830859	GASKET			
212	920620	O - RING	405	841252	MAGAZINE B			
213	830884	O - RING	406	841153	STOPPER			
214	830885	VALVE PLUNGER B	407	920945	HEX.SOC.HD.BOLT			
215	830886	BALL	408	841253	PUSHER			
216	830887	PLUNGER CAP	409	830743	LATCH SPRING BUSHING			
217	830888	O - RING	410	841155	SPIRAL PINS			
218	830889	TRIGGER VALVE HEAD D	411	830862	REAR PLATE			
219	830364	O - RING	412	841084	SPRING PIN			
220	830890	ROUND CROSS SCREW	413	841156	PULL SPRING			
221	830891	TRIGGER	414	841157	SPRING			
222	830892	TRIGGER PIVOT PIN	415	841158	LATCH			
223	920627	URETHANE RETAINER	416	841254	MAGAZINE A			